

## BASIC CHARACTERISTICS

Specific Surface Area (m <sup>2</sup> /g)	=	52 - 65
Density (g/cm <sup>3</sup> )	=	2.2 - 2.4
Average Particle Size (nm)	=	40 - 50
Moisture Content (wt.%)	=	< 1

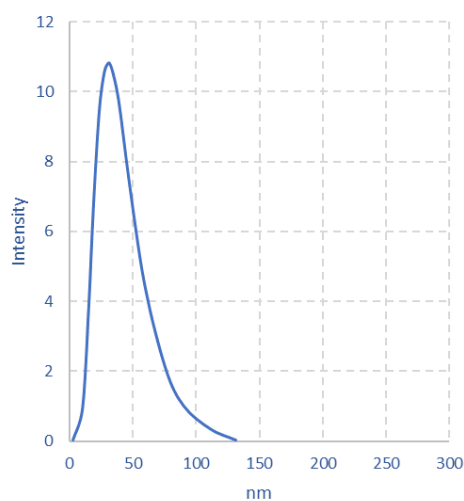
## CRYSTAL STRUCTURE

Crystal phase	=	Silicon Si
Crystallinity	=	> 98 %

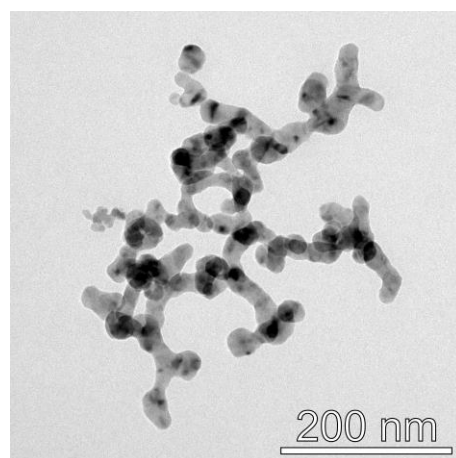
## CHEMICAL COMPOSITION

Silicon (wt. %)	=	> 97
Oxygen (wt. %)	=	< 3
Iron (wt. ppm)	=	< 40
Chromium (wt. ppm)	=	< 20
Nickel (wt. ppm)	=	< 5

## TEM ANALYSIS



Particle size distribution



Sample TEM picture