

BASIC CHARACTERISTICS

Bulk density (g/l)	=	> 300
Specific Surface Area (m²/g)	=	24 - 29
Density (g/cm³)	=	3.1 - 3.2
Average Particle Size (nm)	=	65 - 80
Moisture Content (wt.%)	=	< 1

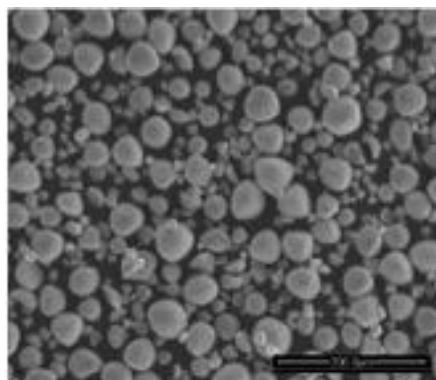
CRYSTAL STRUCTURE

Crystal phase	=	SiC 3C (beta)
Crystallinity	=	> 98 %

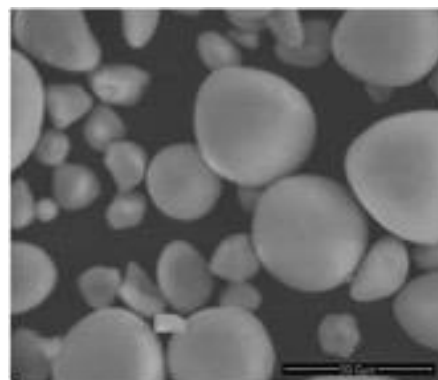
CHEMICAL COMPOSITION

Silicon (wt. %)	=	67 - 71
Carbon (wt. %)	=	28 - 32
Oxygen (wt. %)	=	< 1.50
Iron (wt. ppm)	=	< 40
Chromium (wt. ppm)	=	< 20
Nickel (wt. ppm)	=	< 5

MICROSCOPY ANALYSIS



Scale : 200 µm



Scale : 50 µm