

## BASIC CHARACTERISTICS

Specific Surface Area (m <sup>2</sup> /g)	=	48 - 58
Density (g/cm <sup>3</sup> )	=	3.1 - 3.2
Average Particle Size (nm)	=	32 - 40
Moisture Content (wt.%)	=	< 1

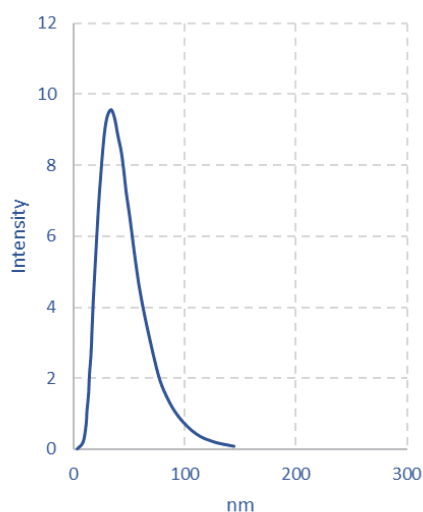
## CRYSTAL STRUCTURE

Crystal phase	=	SiC 3C (beta)
Crystallinity	=	> 98 %

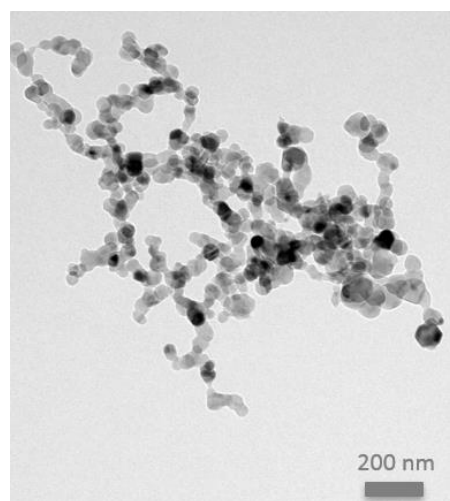
## CHEMICAL COMPOSITION

Silicon (wt. %)	=	67 - 71
Carbon (wt. %)	=	28 - 32
Oxygen (wt. %)	=	< 1
Iron (wt. ppm)	=	< 40
Chromium (wt. ppm)	=	< 20
Nickel (wt. ppm)	=	< 5

## TEM ANALYSIS



Particle size distribution



Sample TEM picture