

**BASIC CHARACTERISTICS**

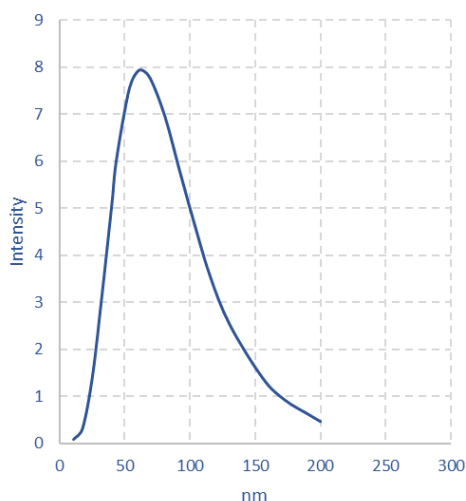
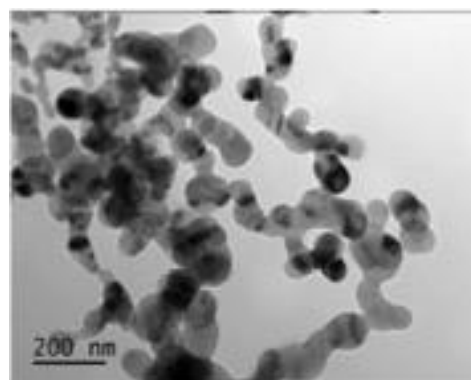
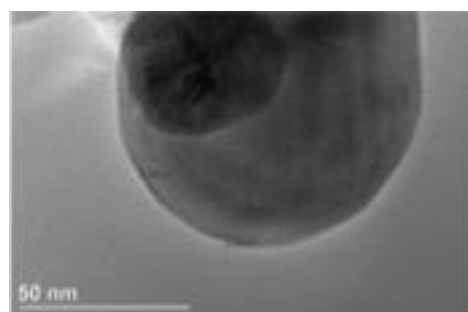
Specific Surface Area (m <sup>2</sup> /g)	=	29 - 37
Density (g/cm <sup>3</sup> )	=	2.2 - 2.4
Average Particle Size (nm, incl. coating)	=	70 - 90
Moisture Content (wt.%)	=	< 1

**CRYSTAL STRUCTURE**

Crystal phase core	=	Silicon Si
Amorphous phase carbon shell		

**CHEMICAL COMPOSITION**

Silicon (wt. %)	=	> 96
Carbon (wt. %)	=	0.5 - 1.5
Oxygen (wt. %)	=	< 3
Iron (wt. ppm)	=	< 40
Chromium (wt. ppm)	=	< 20
Nickel (wt. ppm)	=	< 5

**TEM / HRTEM ANALYSIS**

**Particle size distribution**

**Sample TEM picture**

**Uniform carbon coating = 1 - 2 nm**