

BASIC CHARACTERISTICS

| | | |
|---|---|-----------|
| Specific Surface Area (m ² /g) | = | 24 - 29 |
| Density (g/cm ³) | = | 3.1 - 3.2 |
| Average Particle Size (nm) | = | 65 - 80 |
| Moisture Content (wt.%) | = | < 1 |

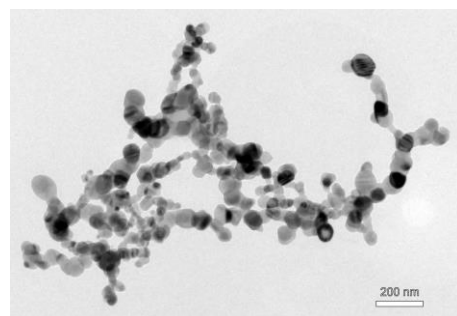
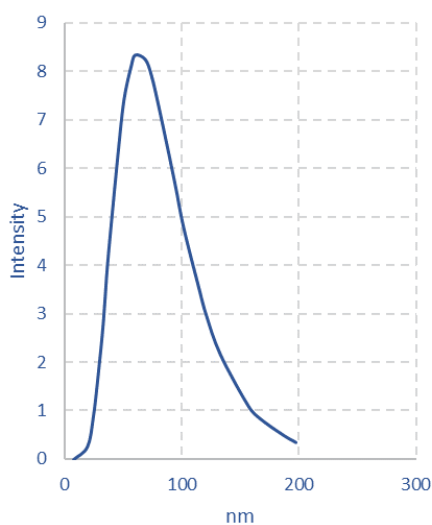
CRYSTAL STRUCTURE

| | | |
|---------------|---|---------------|
| Crystal phase | = | SiC 3C (beta) |
| Crystallinity | = | > 98 % |

CHEMICAL COMPOSITION

| | | |
|--------------------|---|---------|
| Silicon (wt. %) | = | 67 - 71 |
| Carbon (wt. %) | = | 28 - 32 |
| Oxygen (wt. %) | = | < 1 |
| Iron (wt. ppm) | = | < 40 |
| Chromium (wt. ppm) | = | < 20 |
| Nickel (wt. ppm) | = | < 5 |

TEM ANALYSIS



Particle size distribution

Sample TEM picture