

BASIC CHARACTERISTICS

Specific Surface Area (m ² /g)	=	30 - 38
Density (g/cm ³)	=	2.2 - 2.4
Average Particle Size (nm)	=	68 - 85
Moisture Content (wt.%)	=	< 1

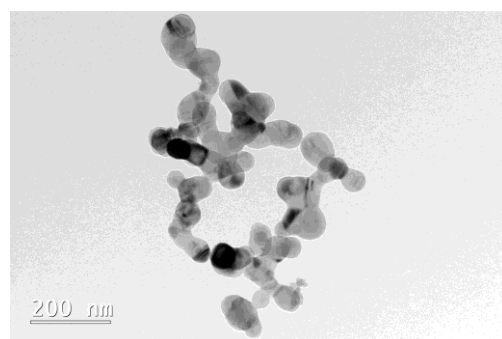
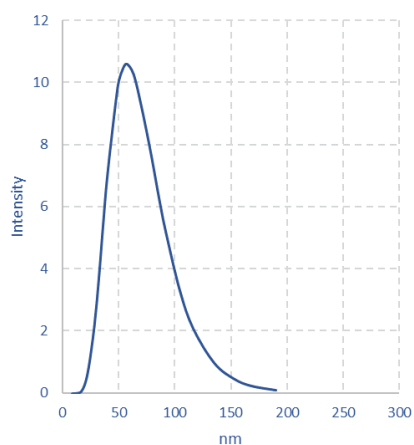
CRYSTAL STRUCTURE

Crystal phase	=	Silicon Si
Crystallinity	=	> 98 %

CHEMICAL COMPOSITION

Silicon (wt. %)	=	> 98
Oxygen (wt. %)	=	< 2
Iron (wt. ppm)	=	< 40
Chromium (wt. ppm)	=	< 20
Nickel (wt. ppm)	=	< 5

TEM ANALYSIS



Particle size distribution

Sample TEM picture