

BASIC CHARACTERISTICS

Specific Surface Area (m ² /g)	=	29 - 37
Density (g/cm ³)	=	2.2 - 2.4
Average Particle Size (nm, incl. coating)	=	70 - 90
Moisture Content (wt.%)	=	< 1

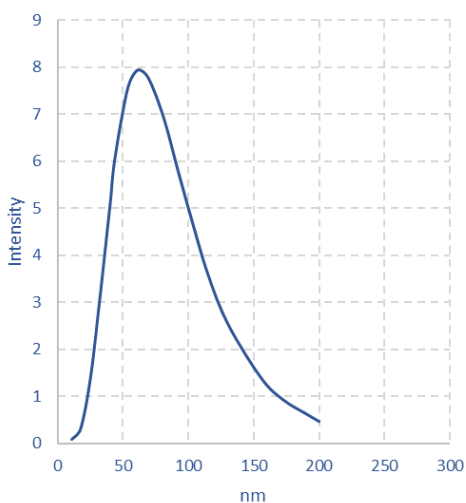
CRYSTAL STRUCTURE

Crystal phase core	=	Silicon Si
Amorphous phase carbon shell		

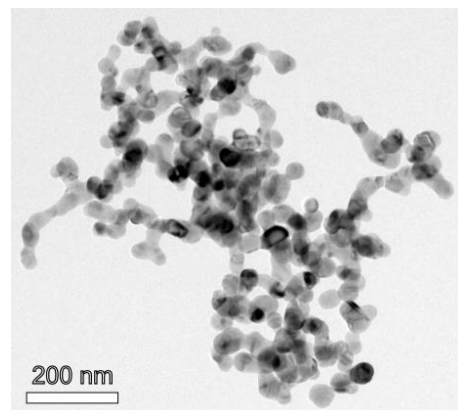
CHEMICAL COMPOSITION

Silicon (wt. %)	=	> 96
Carbon (wt. %)	=	0.5 - 1.5
Oxygen (wt. %)	=	< 3
Iron (wt. ppm)	=	< 40
Chromium (wt. ppm)	=	< 20
Nickel (wt. ppm)	=	< 5

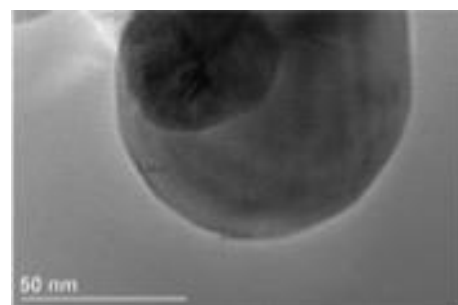
TEM / HRTEM ANALYSIS



Particle size distribution



Sample TEM picture



Uniform carbon coating = 1 - 2 nm